

SHARPCHAIN®



Swing Arm Grinder

INSTRUCTIONS

Used with Silvey SNO21-H Wheels

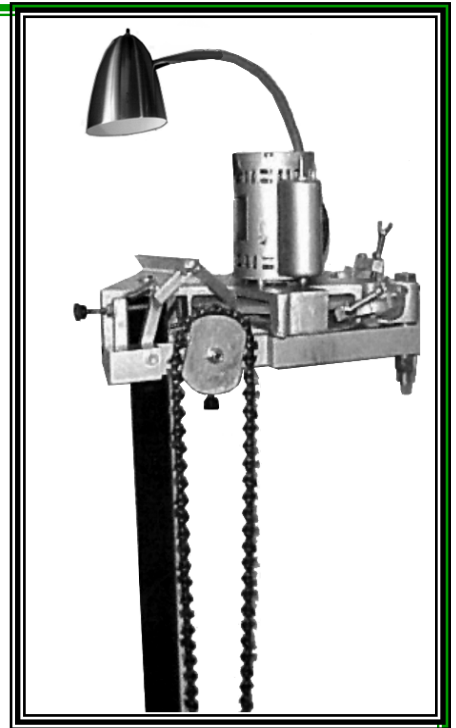
Manufactured by:  **SILVEY®**

4007 Crater Lake Highway Medford, OR 97504

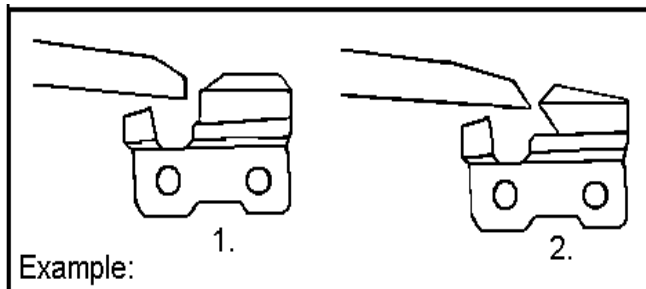
www.silveychaingrinder.com Phone: 541-734-4118

SWING ARM GRINDER

OPERATING INSTRUCTIONS



- The dressing of the grinding wheel will affect the shape of the chisel cutter.
- The leading edge diamond dresser determines the side plate angle of the chisel cutters. (See examples 1 and 2 below.) Example 1 is very close to the desired shape.
- The top angle of the grinding wheel determines the top plate angle of the chisel cutter.
- The flatter the top plate angle on the grinding wheel, the lesser the angle on the top plate of the chisel cutters.
- The steeper the angle on the grinding wheel, the greater the top plate angle on the cutter.
- Always proceed slowly in dressing the grinding wheel.
- The position of the diamond dresser can be changed to achieve the desired grinding wheel shape. Don't take too much material off the wheel at one time.
- Using caution will lengthen the life of the diamond dressers and grinding wheel considerably.



1. After the grinding wheel has been dressed, place a chain in the chain guide.
2. **WITH THE MOTOR OFF** move the chain into the grinding wheel. Position the chisel cutter against the grinding wheel so the corner of the cutter and the

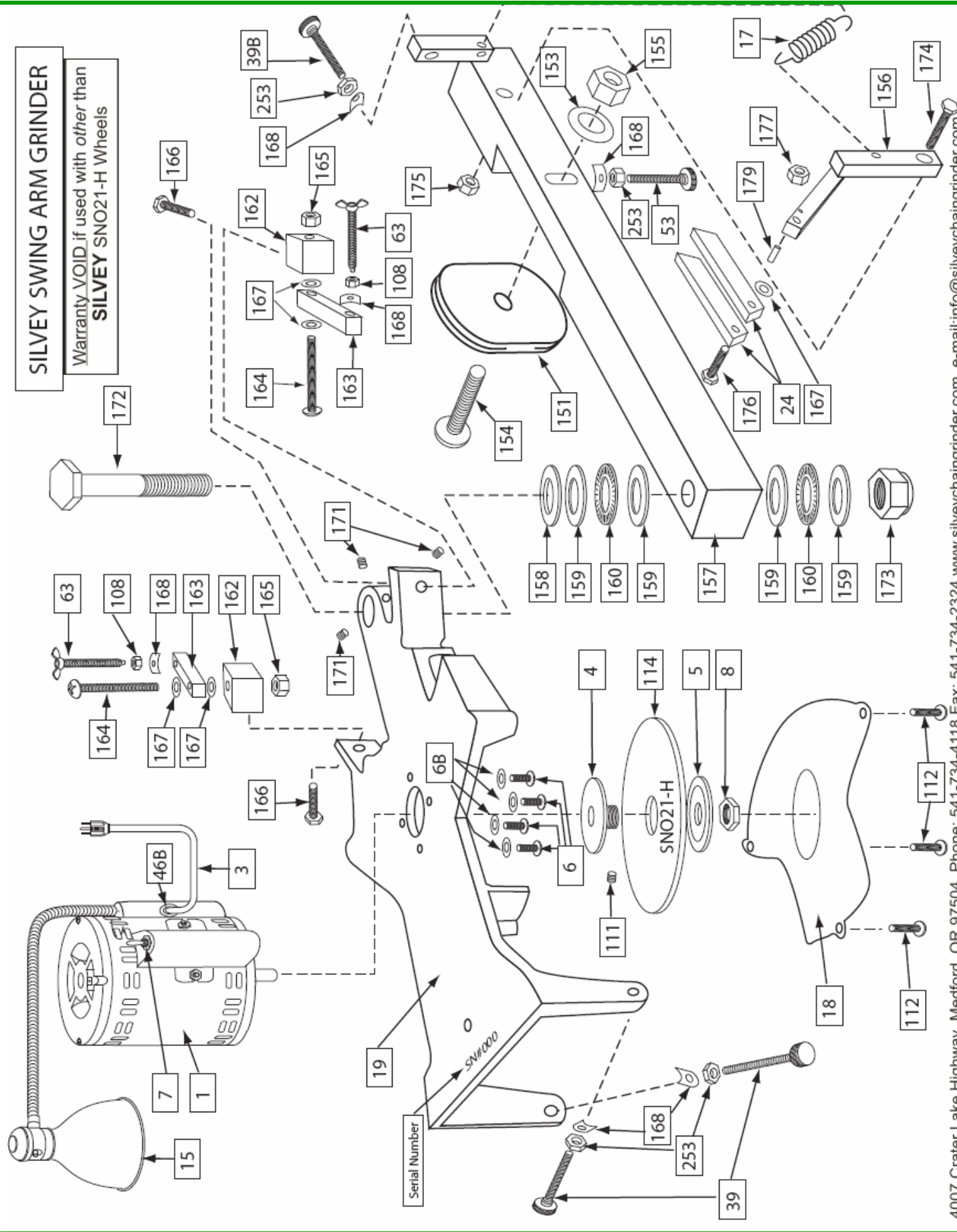
corner of the grinding wheel are aligned. Position the cutter stop against the back of the cutter and set the depth stop.

3. Move the chain away from the grinding wheel. Start the motor - wheel turning **into** the tooth. Move the chain slowly into the grinding wheel. Make final adjustments with the cutter stop and the depth stop screw. Don't take too much material off the cutters at one time - As it may cause them to be burned.
4. Proceed to the next cutter by moving the chain guide away from the grinding wheel. Pull the chain forward until the next cutter to be sharpened passes the cutter stop. Pull the chain backwards until the cutter is positioned against the stop. Move the chain guide into the grinding wheel and sharpen positioned cutter. Proceed until all cutters on one side are sharpened.
5. **TURN THE MOTOR OFF** When the grinding wheel stops, swing the arm around to the other side. Reverse the motor and repeat the above procedure.

WARRANTY VOID
IF OTHER THAN SILVEY GRINDING
WHEELS ARE USED
(USE WHEEL SNO21-H)
ALWAYS USE EYE PROTECTION

SILVEY SWING ARM GRINDER

Warranty VOID if used with other than
SILVEY SNO21-H Wheels



SWING ARM PARTS LIST

<u>ILLUS#</u>	<u>DESCRIPTION</u>	<u>PART #</u>	<u>ILLUS#</u>	<u>DESCRIPTION</u>	<u>PART #</u>
SN	Serial Number Location.....	SN	155	Chain Bar Mount Nut.....	155-SA
1	Motor.....	1-SA	156	Stop Mount Bracket.....	156-SA
	Motor w/ Light Assembly.....	2-R	157	Swing Arm.....	157-SA
3	Motor Cord.....	3-SA	158	Rubber Washer.....	158-SA
4	Arbor.....	4-SA	159	Thrust Washer.....	159-SA
5	Arbor Flange.....	5-SA	160	Thrust Bearing	160-SA
6	Motor Mount Screw	6- SA	162	Dresser Block.....	162-SA
6B	Motor Lock Washers.....	6B-SA	163	Dresser Arm.....	163-SA
7	Switch.....	7-SA	164	Dresser Arm Bolt	164-SA
8	Arbor Nut	8-SA	165	Dresser Bolt Lock Nut	165-SA
15	Lamp Assembly.....	15-SA	166	Dresser Block Bolt	166-SA
17	Spring.....	17-SA	167	Fiber Washer.....	167-SA
18	Wheel Cover.....	18-SA	168	Plastic Lock Washer.....	168-SA
19	Motor Mount & Wheel Guard.	19-SA	171	Swing Arm-Adj. Set Screw.....	171-SA
24	Stop Pawl - (Sets Only).....	24-SA	172	Swing Arm-Mounting Connector Bolt	172-SA
39	Chain Bar Stop Screw & Knob..	39-SA	173	Swing Arm-Mounting Connector Nut	173-SA
39B	Tooth Length Adj Screw & Knob.	39B-SA	174	Stop Mount Bracket Bolt	174-SA
46B	Cord Lock.....	46B-SA	176	Stop Pawl Assembly Bolt.....	176-SA
53	Chain Bar Adj Screw Mount... 53-SA	53-SA	177	Stop Pawl Assembly Nut	177-SA
63	Diamond Dresser.....	63-SA	179	Stop Pawl Roll Pin.....	179-SA
108	Dresser Nut.....	108-SA	253	Adjustment Nut	253-SA
111	Arbor Set Screw.....	111-SA	258	Stand Bolt	258-RT
112	Wheel Cover Screw.....	112-SA	259	Stand Height Adj. Bolt.....	259-RT
114	Grinding Wheel ** SNO21-H..	114-SA	260	Leg Bolt 6 Needed-2 Per Leg Price Ea.	260-RT
	Motor Bearings-Front Shaft End.	146A-SA	261	Stand Base.....	261-RT
	Motor Bearings (Back End).....	146B-SA	262	Stand Extension.....	262-RT
151	Chain Bar.....	151-SA	263	Stand Leg-3 Needed Price Per Leg	263-RT
153	Washer	153-SA		R2 / Tripod Stand Complete.....	300-RT
154	Chain Bar Mount Bolt	154-SA			

**** WARRANTY VOID IF OTHER THAN SILVEY WHEELS ARE USED**

PRICES FOB MEDFORD, OREGON -

SUBJECT TO CHANGE WITHOUT NOTICE

Warranty Void if not used with
Silvey SNO21-H Wheels

Manufactured by:



4007 Crater Lake Highway
Medford, Oregon 97504

Phone: 541-734-4118

Fax: 541-734-2324

E-mail: info@silveychaingrinder.com

Web: www.silveychaingrinder.com