

SHARPCHAIN®

Model SDM-4

SQUARE CHISEL CHAIN GRINDER

OWNERS MANUAL

MANUFACTURED BY:

 **SILVEY**® CHAINGRINDER CO.

4007 CRATER LAKE HIGHWAY

MEDFORD, OR 97504

Phone: 541-734-4118

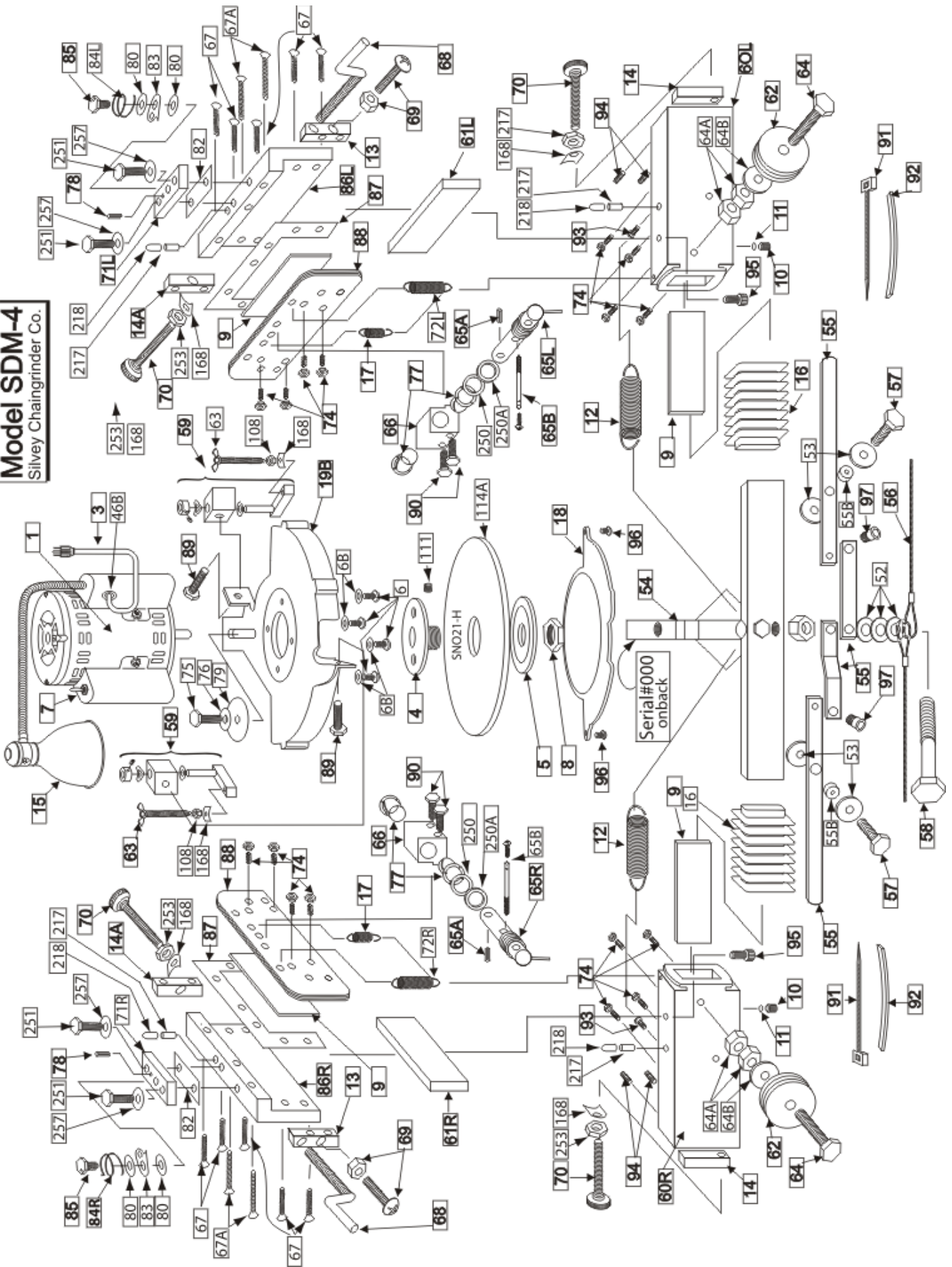
Fax: 541-734-4118

E-mail: info@silveychaingrinder.com www.silveychaingrinder.com

SDM-4 GRINDER USAGE SUGGESTIONS

1. Place grinder on the stand.
2. Connect the proper power source.
3. Pull the handle down to move the carriage away from the grinding wheel.
4. Turn the switch to the proper direction. Grind from the outside of the chain to the inside. (Grind from the outside to the inside on both sides of the chain.)
5. Install the chain in the bar groove. Move the chain backward until the tooth to be sharpened passes stop. Pull the chain forward until the depth gauge contacts the stop.
6. Move the handle slowly into the wheel. The adjustment knob at the end of the in-out slide should be adjusted to stop inward movement of the slide.
Adjustment should be made to let the corner of the wheel, align with the *outside* corner of the tooth.
7. When the corner of the wheel is aligned with the corner of the tooth, turn feed handle on front end of carriage to feed chain into the wheel.
8. After the tooth is ground, turn feed handle one turn back to clear the tooth of the wheel. Pull handle down to release the tooth and move tooth away from the wheel. Shift next tooth of the same side to be ground into position.
Repeat until all teeth on that side of the chain have been sharpened.
9. Repeat all of the above until all of the teeth are sharpened on the other side.
10. The wheel should be dressed lightly after each grind.
11. Always dress the corner of the wheel

Model SDM-4
Silvey Chaingrinder Co.



SDM- 4 PARTS / PRICE LIST

<u>ILLUS.#</u>	<u>DESCRIPTION</u>	<u>PART #</u>
SN	Serial Number Location.....	
1	Motor.....	1-4
	Motor with Light Assembly	2-4
3	Motor Cord.....	3-4
4	Arbor.....	4-4
5	Arbor Flange.....	5-4
6	Motor Mounting Screw	6-4
6B	Motor Lock Washers.....	6B-4
7	Switch.....	7-4
8	Arbor Nut.	8-4
9	Gib.....	9-4
10	Set Screw	10-4
11	Nylon Button.....	11-4
12	Spring.....	12-4
13	Extrusion End Plug (1/4 x 5/16 Hole).....	13-4
14	Extrusion End Plug (1/4 Hole - End).....	14-4
14A	Extrusion End Plug (1/4 Hole - Center).....	14A-4
15	Light Assembly.....	15-4
16	Boot.....	16-4
17	Spring (Long).....	17-4
18	Wheel Cover.....	18-4
19B	Motor Mount & Wheel Guard.....	19B-4
46B	Cord Lock.....	46B
54	Machine Base	54-4
55	Control Handle Assembly.....	55-4
56	Control Cable	56-4
57	Handle Mount Bolt - Side	57-4
58	Handle Mount Bolt - Center	58-4
59	Diamond Dresser Mount Assembly.....	59-4
60L	Carriage Bar Mount Slide - Left.....	60L-4
60R	Carriage Bar Mount Slide - Right.....	60R-4
61L	Carriage Bar - Left.....	61L-4
61R	Carriage Bar - Right.....	61R-4
62	Control Cable Pulley.....	62-4
63	Diamond Dresser.....	63-4
64	Pulley Mount Bolt & Nut	64-4
65R	Hold Down Pin & Spring Assembly - Right.....	65R-4
65A	Hold Down Pin.....	65A-4

SDM- 4 PARTS / PRICE LIST CONT

<u>ILLUS.#</u>	<u>DESCRIPTION</u>	<u>PART #</u>
65L	Hold Down Pin & Spring Assembly - Left.....	65L-4
65R	Hold Down Pin & Spring Assembly - Right.....	65R-4
65A	Hold Down Pin.....	65A-4
65B	Hold Down Assembly Cable Arm.....	65B-4
66	Hold Down Assembly Mounting Block.....	66-4
68	Chain Feed Handle.....	68-4
69	Carriage Return Stop Screw & Nut	69-4
70	Carriage Forward Stop Screw & Knob.....	70-4
71L	Stabilizer W/ Stop, Spring, Bolts - Left.....	71L-4
71R	Stabilizer W/ Stop, Spring, Bolts - Right.....	71R-4
72L	Carriage Return Spring - Left.....	72L-4
72R	Carriage Return Spring - Right.....	72R-4
73	Oil Tube.....	73-4
74	Gib Adjustment Screw & Nut.....	74-4
	Carriage Assembly - Left.....	75L-4
	Carriage Assembly - Right.....	75R-4
76	Washer	76-4
77	Bushing.....	77-4
78	Roll Pin.....	78-4
79	Fender Washer.....	79-4
	Motor Bearing (Front End - Shaft).....	81A-4
	Motor Bearing (Back End).....	81B-4
82	Shim	82-4
83	Stop Pawl.....	83-4
84	Stop Pawl Spring - Right.....	84R-4
84	Stop Pawl Spring - Left.....	84L-4
85	Stop & Spring Mounting Bolt.....	85-4
86L	Carriage Extrusion - Left.....	86L-4
86R	Carriage Extrusion - Right.....	86R-4
87	Gasket.....	87-4
88	Chain Bar.....	88-4
89	Dresser Assembly Bolt	89-4
90	Hold Down Assembly Mounting Block Bolt	90-4
91	Nylon Tie Strap.....	91-4
92	Foam Tape Strip.....	92-4
93	Screw	93-4
94	Set Screw	94-4

SDM - 4 PARTS / PRICE LIST CONT

<u>ILLUS.#</u>	<u>DESCRIPTION</u>	<u>PART #</u>
94	Set Screw.....	94-4
95	Cap Screw.....	95-4
96	Wheel Cover Screw.....	96-4
97	Handle Connector Bolt.....	97-4
111	Arbor Set Screw.....	111-4
114A	Wheel ** (SNO21-H).....	114A-4
	Old Style Light Bulb.....	115-4
258	Stand Mounting Bolt	258-S
259	Stand Height Adjustment Bolt.....	259-S
260	Leg Bolt 6 Needed - 2 Per Leg.....	260-S
261	Stand Base.....	261-S
262	Stand Extension.....	262-S
263	Stand Leg (Price Each Leg) 3 Needed.....	263-S
265	Handle Mount Bolt.....	265-S
266	Handle Mount Bushing.....	266-S
	Pro Sharp / SDM-4 Stand Complete.....	300-S

PRO SHARP / SDM-4 STAND

<u>Illus.</u>	<u>Part</u>	<u>Part #</u>	<u># Req.</u>	
	258	Stand Mount Bolt	258-PS	1
	259	Stand Height Bolt	259-PS	1
	260	Leg Bolt	260-PS	6
	261	Stand Base	261-PS	1
	262	Stand Extension	262-PS	1
	263	Stand Leg	263-PS	3

